



# UK Dementia Awards 2026

Celebrating Effort – Inspiring Change

Headline Sponsor



## Programme

30th April 2026, Coombe Abbey Hotel, Warwickshire

# Welcome



A warm welcome from us both to the UK Dementia Awards 2026. These awards are designed to recognise excellent dementia care and the talented individuals and teams who deliver dementia care services. We are delighted to host this gala lunch in the beautiful surroundings of Coombe Abbey Hotel. We are immensely grateful to our sponsors whose generous support has made these awards possible, to our panels of judges representing a wide range of professional and lived experience, and to the wonderful people who entered or were nominated. Thank you to everyone attending this special event today and for your support for the finalists and their dedicated colleagues and teams. We hope you have an amazing day!



**Jude Sweeting** and **Barbara Stephens**.



**LIVE MUSIC**  
from **Jasmine Ali**  
Musician and singer

Find her on:  
Facebook [@jamineali13](#)  
Instagram [@jaminealimusic](#)  
and YouTube [@JamTart13](#)

## SPECIAL GUEST **Alexander Dragonetti**



We are delighted to welcome Alexander Dragonetti as our special guest at the UK Dementia Awards 2026.

Alexander is well known as a faithful and the “People’s Champion” on the 2025 series of The Traitors. As a former British Diplomat, Alexander was stationed

in Africa, Asia, the Middle East, and Ireland. He led crisis deployment teams to Nepal after earthquakes, met tribes in Pakistani Hindu Kush, spent time in Gaza to trauma assess staff.

Before joining the Foreign Office, Alexander was a teacher in a socially disadvantaged and highly challenging London school.

Outside of work Alexander is a dedicated activist for causes surrounding education, disability and health and is an ambassador for Mencap

Charity Partner



*The UK Dementia Awards are a wonderful way to recognise and reward the talent and commitment we have in this sector, exemplified by the very high standard of all this year’s finalists.*

**Sue Benson**, Managing Editor of the *Journal of Dementia Care*

# Dementia Homecare Provider Award

★ **ADSS Support at Home**

★ **In Friendship – Home Care and Support**

★ **Nicola Egan - South Lanarkshire Council**

★ **Right At Home, Havant & Petersfield**

★ **The Willows at Home**

## Award Sponsor



**Dementia Community** is a Charitable Community Benefit Society providing learning and networking opportunities for the dementia care community.

Key activities include: publishing the Journal of Dementia Care bi-monthly and hosting regular webinars, the UK Dementia Awards, and the annual flagship event, the UK Dementia Congress.

Dementia Community is a membership co-operative with two membership levels: Investor Membership and Community Membership. Community Members own a £1 share in the Society and benefit from a reduced-cost subscription to the Journal of Dementia Care and discounted tickets for the Congress and other events organised by Dementia Community.

## Judges



**Sandra Graham**

Sandra works for Sandwell Community Dementia Service as a Dementia Navigator. Sandra cared for her mum who had vascular dementia, and values the opportunity to work with others who share her passion for improving the lives of people with dementia and their carers.



**Pam Kehoe**

Pam is the lead Admiral Nurse for ‘Dementia at Work’ with Dementia UK. She has been an Admiral Nurse since 2002 and has held senior positions in community and acute hospital settings. Pam enjoys teaching, training and mentoring. She was awarded the prestigious title of Queen’s Nurse in 2022.

# Respite Care and Carer Support Award

## Judges



**Dr Karan Jutla**

Karan is Founder and Director of the Centre for Applied and Inclusive Health Research and Dementia Lead at the University of Wolverhampton. Her research focuses on reducing health inequalities, particularly among ethnic minorities affected by dementia. Her grassroots approach has significantly improved support for underserved, underrepresented diverse communities.



**Dr Chris Knifton**

Chris is Associate Professor in Neurocognitive and Neurodevelopmental support at De Montfort University, Leicester. A registered learning disability nurse, social worker, and Admiral Nurse, Chris co-leads the Higher Education in Dementia Network and contributes to Childhood Dementia Scotland. He is a published author and experienced conference speaker and presenter.

★ **Dementia Carers Count, Services Team**

★ **Dementia Support Services  
Dementia Adventure**

★ **Empowered Carers Team, Age UK Salford**

★ **Halesworth Dementia Carers Fund**

★ **Together Dementia Support**

★ **Young at Heart ULO CIC**

### Award Sponsor



#### **Dementia Pathfinders Community Interest Company**

*Encouraging learning and togetherness in dementia care*

Dementia Pathfinders works nationally and locally to provide therapeutic care and support for people with dementia and their families, and programmes of education for people in the dementia care field.

Through co-production with people with lived experience and investment in projects and services, Dementia Pathfinders aims to produce resources and deliver activities that create meaningful opportunities for people living with dementia and their families.

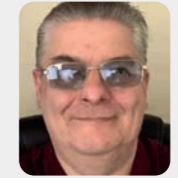
# Equity, Diversity and Inclusion in Dementia Award

## Judges



**Dr Shirley Evans**

Shirley is Director of the Association for Dementia Studies at the University of Worcester. She specialises in post-diagnostic support, community interventions, and technology. She leads the Meeting Centres UK Network and chairs Dementia Matters Herefordshire, delivering community initiatives including carers groups, memory cafés, and support services



**Howard Gordon**

Howard, a former healthcare professional, lives with dementia and promotes the rights of people with dementia to control their own lives. He champions the disability model of dementia, promotes a rights-based approach to care and advocates for social justice. His broadcasts on Deepness Dementia Radio challenge assumptions and promote autonomy.

★ **ADSS Guru Nanak Darbar Gurdwara**

★ **Atfield House Care Home, Subin Sebastian**

★ **Christelle Tulia and Madeleine Laini  
Kiyana Wraps**

★ **Dementia UK, Consultant Admiral Nurse  
& Health Inequalities Team**

★ **Psychology and Additional Therapies Teams  
Bristol Dementia Wellbeing Service**

★ **Sheffield Memory Hub**

### Award Sponsor



The Centre for Applied and Inclusive Health Research (CAIR) at the University of Wolverhampton has a specific focus on delivering research that can improve the health and wellbeing of our diverse population, reduce health inequalities and advance health care professional practice. CAIR focuses on a range of health disciplines via research clusters co-ordinated by a multi-disciplinary team of academics. The Living Well with Dementia research cluster aims to improve the lives of people living with dementia and their families in our diverse society across the dementia care pathway

# Young Onset Dementia Award

## Judges



### Maria Parsons

Maria is Chief Executive of the Creative Dementia Arts Network (CDAN), providing training and support for arts practitioners working with people with dementia. A social worker, her career spans academia, research, and management. She authored The Creative Dementia Practice Handbook (2025) and has lived experience as a carer.



### Natalie Ravenscroft

Natalie leads NAPA's services and partnerships, overseeing programme delivery and key relationships. She brings extensive experience as an Activity Provider, Information and Advice Practitioner and Adult Learning Practitioner, and is a recognised speaker with a passion for evidence based practice.

- ★ Childhood Dementia Scotland
- ★ Dementia Adventure
- ★ Haya Ghneim & Sonya Cantello  
Bristol Dementia Wellbeing Service
- ★ Ian Carter, No Tier Snooker
- ★ Sarah Goodger, Alzheimer's Society
- ★ STAND – Striving Towards A New Day
- ★ Younger People With Dementia CIO (YPWD)

### Award Sponsor



Burns Gym delivers award-winning, evidence-based virtual fitness and wellbeing programmes to care homes across the UK and internationally. Founded by Scottish brothers Joe and Tony Burns, three-time winners of Scotland's Personal Trainers of the Year. Burns Gym sessions are delivered live in kilts, creating a fun, inclusive community experience for residents and staff alike. Burns Gym collaborates with the University of Strathclyde on research evidencing measurable improvements in residents' mobility, mood, and social engagement.

# Intergenerational Award

## Judges



### Dr Isabelle Latham

Isabelle is Researcher-in-Residence for Hallmark Care Homes and Honorary Senior Research Fellow at the University of Worcester. With 30 years' social care experience, including 15 in research, she specialises in care homes, advanced dementia, and staff training, translating research into practice to improve daily life for residents.



### Penny Mittler

Penny is family carer to her beloved husband, Peter, who was diagnosed with Alzheimer's 20 years ago. Peter now lives in a care home and Penny lives nearby. Penny's background is in education; she taught special needs and human rights in schools and universities before joining Peter in international consultancy work in the same field.

- ★ Adopt a Grandparent, David Annand
- ★ ADSS Beacon Buddies & Babies
- ★ Bristol Dementia Wellbeing Service  
Sally Townsend
- ★ Lullaby Circle, Alive Activities
- ★ Ready Generations Nursery  
Sue Egersdorff
- ★ The Quilters Federation of Schools

### Award Sponsor



Symphony Sound specialises in creating healthier, more comfortable care environments through tailored acoustic solutions.

The services provided by Symphony Sound are designed to reduce noise, enhance speech clarity, and support the wellbeing of residents and staff in care homes, hospitals, and assisted living facilities.

# Creative Arts and Culture in Dementia Organisation Award

## Judges



**Joanna James**

Joanna is a Consultant Nurse at Imperial College Healthcare NHS Trust and Clinical Lead for MinderCare. With dementia experience since 2008, she champions creative arts in care, especially in hospitals. She has led collaborative projects, co-authored two books, and is an honorary senior research associate at Imperial College's Dementia Research Institute.



**John Angel Bond (Bondy)**

John is a PhD researcher in Dementia Studies at the University of Stirling, specialising in queer men living with dementia. Inspired by supporting a gay man who felt forced back into the closet, he now directs the LGBTQ+ Dementia Advisory Group and previously cared unpaid full time for his mum.

★ Arts for Dementia

★ Bright Shadow

★ Centring Research Project, Northumbria University (DACI) and Beamish Museum (Health and Wellbeing)

★ Christelle Tulia and Madeleine Laini Kiyana Wraps

★ Magic Me, Spark Team

★ Manchester Camerata

★ Resonate Arts, Creative Space Team

★ Sheffield Memory Hub

★ Vamos Theatre Company



Join our community for just £1



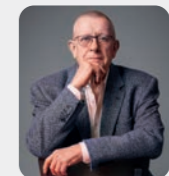
# Creative Arts and Culture in Dementia Individual Award

## Judges



**David Truswell**

David has over 30 years' experience in community-based mental health services, supporting people with complex needs across the voluntary sector, local authorities, and the NHS in senior roles. He focuses on social inclusion and improving care for people from marginalised and disadvantaged communities.



**Peter Middleton**

Pete was diagnosed with Young Onset Dementia five years ago. Since then, he's devoted all his time to working with the dementia community to improve awareness, provision and understanding. He has a particular interest in the provision of care in a residential setting and campaigns to raise the profile of carers and elevate their status within society.

★ Ellie Lucas, NAPA

★ Karen Smeath, Blair House

★ Laura Harling, The Dot Collective

★ Sam Lord, Memory Laners Dementia Music Group

## Award Sponsor



Creative Dementia Arts Network (CDAN) is a Bristol based charity with a national reach. CDAN supports the development of a creative arts workforce to promote health and wellbeing in dementia care.

The key activities of Creative Dementia Arts Network are:

- Running projects and organising conferences that enable people living with dementia and their carers with professionals and practitioners across arts, culture, health and social care to connect through creative arts and cultural activities.
- Providing training and supervision through FLOURISH, our specialist practice learning course for creative arts practitioners.

# Promoting Health & Wellbeing in Dementia Award

## Judges



### Dr Graham Stokes

Graham is Director of Dementia and Specialist Services Innovation at HC-One and Honorary Visiting Professor at the University of Bradford. A clinical psychologist, he has led development of person-centred approaches to understanding behaviour in dementia and influenced modern dementia-friendly care environment design.



### Jagdish Brar-Orgill

Jag gave up her career to care and advocate for her Mum who lived with Alzheimer's and vascular dementia. Navigating her way through fragmented services, ensuring that her Mum remained in her own home and safe, nearly broke her. Jag is channelling her grief into raising awareness for South Asian communities and improving services.

★ Dementia Friendly Hampshire, Jane Ward

★ Forest of Avon, Rachel Tomlinson

★ Milford House, Nicole Thompson

★ Moving Minds, Elaine Harvey

★ St Clare Hospice, Joanne Morrison

★ St Johns Winchester Dementia Support Service and Admiral Nurses, Jeni Bell, Anne Evans and Anne Green

★ The Hoppiness Project, Alive Activities

### Award Sponsor



The National Activity Providers Association (NAPA) is the UK charity and professional body for Activity Providers. We are dedicated to making a positive impact on the lives of individuals by championing activity, engagement and wellbeing. NAPA represents and supports professionals working across health, social care, housing and community settings. We promote best practice, set standards, provide training and professional development, advocate for our members and create opportunities for networking, collaboration and innovation in activity provision.

# Dementia Care Team Award

★ ADSS Dementia Coordinators

★ Dementia Oxfordshire, a service provided by Age UK Oxfordshire

★ Dementia UK, Admiral Nurses Helpline and Clinics

★ Dementia UK, Consultant Admiral Nurse & Health Inequalities Team

★ GP Linkworker Team, Well up North PCN

★ Heatons Unit, Exemplar Care

★ Quality Improvement Project Team, Friarage Hospital Catering and Housekeeping (University Hospitals Tees)

★ Well-Being Team, Milford Care

### Award Sponsor



Social-Ability: Transforming Dementia Care Through Meaningful Moments.

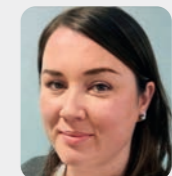
See page 16

## Judges



### Jude Sweeting

Jude's career spans cancer and prison nursing, dementia service development and coaching and facilitation to inspire creative leadership in dementia care. She co-founded the Resonate Arts programme in Westminster. Both her parents had dementia. Now retired, Jude is Chair of Resonate Arts, a Director of Dementia Pathfinders CIC and Dementia Community CBS.



### Natalie Ravenscroft

Natalie leads NAPA's services and partnerships, overseeing programme delivery and key relationships. She brings extensive experience as an Activity Provider, Information and Advice Practitioner and Adult Learning Practitioner, and is a recognised speaker with a passion for evidence based practice.

# End of Life Care in Dementia Award

## Judges



### Dr Zena Aldridge

Zena is a Clinical Academic specialising in dementia care. She is currently the NIHR Nursing and Midwifery Associate Director for Social Care and an NIHR Senior Clinical Practitioner Research Awardee. As an Independent Dementia Nurse Consultant, Zena is a published author and maintains a portfolio of clinical, research and leadership activities.



### Marion Shoard

Marion writes and lectures about older people's issues and is the author of *How to Handle Later Life*. After a career in the environment field, she switched focus 25 years ago when faced with the challenge of finding good care for her mother, who was living with dementia.

- ★ **Charli Morgan & Lyssa Fedillaga, Henley Manor, Hallmark Care**
- ★ **Enhanced Hospice at Home Team Saint Francis Hospice**
- ★ **Jewish Care Palliative Care Team**
- ★ **Kallum Chamberlain, Scarlet House, Care UK**
- ★ **Milford Care, End of Life & Palliative Care Team at The Meadows**
- ★ **Primary Care Nurses for Older People. Cardiff North Cluster, Cardiff and Vale UHB**

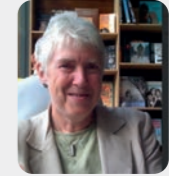
### Award Sponsor



PainChek® is transforming pain management to help give a voice to those who cannot verbalise their pain. PainChek® is the world's first regulatory cleared medical device for the assessment of pain, enabling best-practice pain management for people living with pain in any environment. PainChek® has enabled best-practice management in 1,800+ aged care facilities, with more than 8,800,000 digital pain assessments conducted to date, and is trusted by thousands of nurses, carers and clinicians.

# Leadership in Dementia Award

## Judges



### Ruth Eley

Ruth chairs Together in Dementia Everyday – tide – a UK charity empowering carers to influence policy, practice, and research. She is vice-chair of Liverpool Dementia Action Alliance and a trustee of Dementia Liverpool. A trained social worker, she brings extensive experience in dementia care and carer support.



### Dr Michael Gordon

Michael is a former Sociologist, Management Consultant and Company Director. In 2016 Michael's wife was diagnosed with three rare forms of early onset dementia: nfvPPA, bvFTD and PCA. Michael's experience of dementia is based on caring for his wife and dealing with multiple institutions supporting her care. Michael's wife died in 2023.

★ **Alina Abagiu**

★ **Amanda Kinsella**

★ **Diane Kehoe**

★ **Nicolas Kee Mew**

★ **Rachel Yates-Hoyles**

★ **Sally Tabbner**

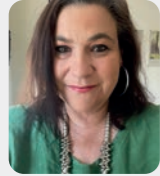
### Award Sponsor



Ally Cares is the UK's leading evidence-based AI Resident Monitoring System, helping care homes put sleep at the heart of wellbeing. Using sound and motion, Ally tracks sleep patterns, night-time routines, agitation and coughing, while alerting staff to unseen needs such as pain, distress, or confusion. By protecting rest and privacy, homes prevent falls, detect infections earlier and deliver calmer nights. Research with NHS and ICBs shows Ally improves residents' sleep by 50%, reduces falls by 63%, and gives carers 30% more time to care.

# Independent Small Provider Award

## Judges



### Hilary Woodhead

Hilary leads NAPA with over 30 years' social care experience. With a background in drama and creative arts, she was among the UK's first Activity Providers. She has held senior roles in care and workforce development, and champions meaningful activity, connection, creativity, and wellbeing across the sector.



### Robin Wells

Robin is Director of Ally Cares, with 25+ years in health and social care IT. Formerly at Person Centred Software and CASPA, he champions sleep as vital to care quality. His work supports AI monitoring systems that improve safety, reduce falls, and enhance wellbeing in residential care settings.

★ Beacon Dementia and Wellbeing

★ Jenna Johnson, Boogie Woogie Music & Memories

★ Rose Lodge Care Home, Exmouth

★ Sheffield Memory Hub

★ Vicky Brown, Dave's Legacy

### Award Sponsor



Focusing on Ability

Dementia Active is a charity with an established track record in providing social activity groups for people who have a diagnosis of dementia.

Dementia is an illness which can isolate people from former friends. The value of spending time with others who can share this sense of isolation cannot be overestimated.

Dementia Active aims to build a nationwide network of Dementia Active centres that provide life-enhancing cognitive stimulation and social support. By working alongside families, carers, and communities, Dementia Active helps people with dementia stay connected, capable, and at home in the world they know and love – for as long as possible.

# Technology and AI in Dementia Award

## Judges



### Emma Hewat

Emma is an independent consultant and experienced leader in dementia care with a strong passion for workforce development and service improvement. At the heart of Emma's work is a deep commitment to dignity, fairness and respect. Drawing on her background as a practitioner and commissioner, she champions evidence-based practice that leads to real and meaningful change.



### Neil Rabbitts

Neil is the Systems Lead for Dementia Community. He has worked on business productivity for over 30 years with companies of all sizes and now specialises in Microsoft 365, which has inevitably led to using Copilot AI. His main hobby is his 66' narrowboat, based at Crick in Northamptonshire.

★ Ally Cares

★ Dovehaven Care Homes, Jo Hadfield

★ House of Memories On The Road

★ Kneu Health, Sydney Sattell

★ Merriman Grange Care Home, Natalie Birch

★ Neuroresponse with the NeuroApp  
Bernadette Porter

★ RecallCue

★ The CONNECT Dementia Engagement System,  
Dr. John Zeisel

### Award Sponsor



The goal of the Unforgettable Foundation is to work collaboratively with research and educational institutions to improve access to services for seldom heard and underserved communities. The Foundation is committed to reducing fear and stigma and creating an informed, compassionate response to the challenges faced by people affected by dementia.

# Environmental Design in Dementia Award

## Judges



### Debbie Carroll

Debbie is an experienced garden designer whose business, Step Change Design, was formed to share the findings of her joint study with fellow designer Mark Rendell into what it takes to create actively used dementia care home gardens. She is co-author of the 'Why Don't We Go Into the Garden?' series of books.



### Victoria Smith

As Project Lead for Dementia Pathfinders, Victoria is responsible for a diverse range of activities, from sourcing products for the online marketplace, to managing a lottery-funded project to expand the scope of circle dance for people living with dementia. Her first role in the dementia field was with Unforgettable Ltd.

★ Amanda Falleth & Kara Gratton, Milford Care

★ Morar at St Andrews

★ Sage House, Tangmere

### Award Sponsor

# KYN

KYN deliver unrivalled care in thoughtfully designed homes filled with warmth and dignity. Transforming residential, nursing, dementia and convalescent care, KYN create a new approach to later years, where quality of life is ageless. Our approach truly connects with the person, their preferred lifestyle, interests and personality, whilst fulfilling their assessed care and health-related needs. By combining clinical expertise with a holistic approach to wellbeing, we maximise and maintain each person's independence and dignity, ensuring the best possible experience of our care.

### Award Sponsor

# social-ability

Social-Ability is dedicated to improving quality of life for people living with dementia and other cognitive challenges. The company's flagship innovation, the 'Happiness Programme', combines interactive light technology with evidence-based content, staff training and family engagement to create genuine moments of joy for people at every stage of their journey. Social-Ability's mission is simple. Create connection. Spark joy. Help people live well in the moments that matter.

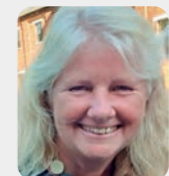
# Dementia Research Award

## Judges



### Dr Jill Rasmussen

Jill trained as a GP and started her career in the NHS before moving into the pharma industry in Europe and the USA. Jill combines part-time clinical practice with her independent research consultancy, psi-napse, advising on new treatments for CNS disorders. Jill is a primary care specialist in dementia, mental health and intellectual disability.



### Jane Ward

Jane was originally an engineer; her mother's diagnosis led to her involvement in dementia. She helped found the Charity Dementia Friendly Hampshire and she is also involved in PPI within dementia research. She volunteers with the Alzheimer's Society Research Network and with Dementia Adventure.

★ Anqa Tirmazee-Kaleem, NAPA

★ Professor Christian Morgner  
University of Portsmouth

★ Professor Richard Cheston,  
University of the West of England

★ Salma Walizadeh, Hallmark Care Homes

### Award Sponsor

# tend®

Careers with heart,  
skills with purpose.

tend® is a UK market leader in training and apprenticeships for professionals in health and social care. As an organisation committed to excellence in care, tend® understands that care providers need a dependable training partner that can more than deliver it. That's what tend® is all about; creating life-changing training and skills for the people who change lives.

tend® is a sector-specific training provider. By connecting the unique needs of care organisations to carefully tailored career pathways for employees, we produce life-long learners who thrive in their roles, and facilitate long-term success for employers.

Tend is part of the wider Impact Futures Group, creating life-changing training for the people who change lives.

# People's Choice Award



## ★ Ian Carter

Ian Carter was bounced into a premature early retirement when he was diagnosed with frontal-temporal dementia at the age of 59, in July 2024. Realising that 'the hardest thing about this condition is motivation', Ian decided to make things happen himself by setting up the No Tier Snooker in Congleton, a place where people with a similar diagnosis and their carers could come for a couple of hours of play and chat. In the remarkably short space of 12 months Ian has attracted both sponsorship and big names in snooker (Steve Davis, Dennis Taylor and WPBSA coach Chris Lovell) to support his idea and other areas are now opening up similar clubs under the 'No Tier' brand.



## ★ Jan Casson

Jan Casson is a pioneering GP Linkworker at Well Up North ensuring that GP practices become not only dementia friendly but compassionate responders at the heart of primary care. She extended her reach becoming the driving force behind Memory Laners Music Group, a vibrant and hugely loved group for people living with dementia and their carers in Berwick. Her commitment to collaboration extends to work with many other local organisations on matters ranging from advice and information, transport, hospital support, research and the Dementia Strategy Steering Group.



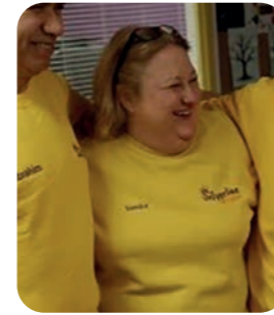
## ★ Ronald Amanze

Ronald Amanze is living with dementia in a way that brings creativity and a deep humanity to the spaces he enters. He translates complex feelings into beautiful poetry and inspires people across all communities to live life fully and without apology. In his contribution to EMPOWER Dementia Network and elsewhere, Ronald brings a willingness to learn and perspectives that enable others to feel that they too can act to make a positive difference.

### Headline Sponsor



Founded in 2005, OM Interactive (OMi) is a pioneer in the design, development and supply of motion activated interactive technology for the care, special needs and health sectors. OMi systems have led the way in developing inclusive sensory environments that truly engage and inspire people of all ages and abilities.



## ★ Sandra Hastings

Sandra Hastings founded Silverline Memories after experiencing first-hand how little support existed for families facing dementia, and she has spent the past 12 years turning that insight into life-changing action. She created the North East's only dedicated dementia activity centre, today supporting over 100 families with compassion, dignity, and genuine connection. An independent 2024 Impact Evaluation highlights the profound difference she makes, with carers describing the service as "a drop of happiness on a difficult journey."



## ★ Vicky Brown

Vicky Brown's Dad had a grim hospital experience at the end of his life with dementia. As a result Vicky, herself an experienced nurse, founded Dave's Legacy to shift the perspectives of both hospital staff and also family carers to something more empathetic and grounded in the practical realities facing families and people living with dementia in hospital. Her innovative teaching package has been adopted by Manchester Foundation Trust and other organisations to help staff truly connect with the human reality behind a dementia diagnosis.



## ★ Wendy Burton

The dementia community in Derbyshire is keenly supporting Wendy Burton's nomination for the People's Choice Award. For many years she has cared for her husband, who has young onset dementia, whilst working for the dementia charity Making Space. Since retiring, Wendy has continued as an expert by experience, shaping the Derbyshire 2025–30 Dementia Strategy, co-chairing the Dementia Together Co-production group, chairing the Rare Dementias Group, engaging Derbyshire's deaf community, and producing a podcast on young onset dementia – showing her unwavering commitment to those touched by young onset dementia. experience, shaping the Derbyshire 2025–30 Dementia Strategy, co-chairing the Dementia Together Co-production group, chairing the Rare Dementias Group, engaging Derbyshire's deaf community, and producing a podcast on young onset dementia – showing her unwavering commitment to those touched by young onset dementia.

# Enhancing Dementia Care *Through Meaningful Engagement*

**OM Interactive (OMi) creates award-winning interactive projection systems for dementia care.**

Designed to promote engagement, reduce agitation, and enhance wellbeing.

## Making a Real Difference in Care

Used across care homes and dementia settings, OMi systems help:

-  **Reduce** restlessness and agitation
-  **Encourage** social interaction and connection
-  **Support** reminiscence and life story work
-  **Promote** gentle movement and activity
-  **Create** calming, therapeutic environments



## Care Provider Insights

What UK care providers report after using Mobii:

**90%**

Report improved memory recall

**93%**

Would recommend the Mobii

**94%**

Say it enables more quality time



Scan to access the full Mobii Executive Insights report

Discover real-world results, care provider feedback, and measurable impact.

**“It can be used for person-centred activities as there is something to suit all needs, and CQC love that.”**

Colette Yuksel, Activities Coordinator,  
Stocks Hall Nursing Home Burscough



## Trusted in Dementia Care

OMi systems are used in:

- Residential and nursing care homes
- Dementia specialist units
- Day centres and community settings
- NHS and hospital environments